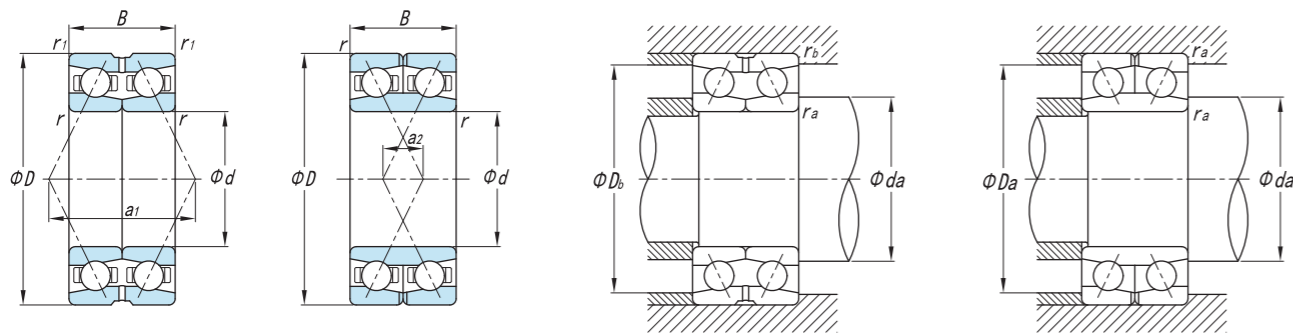


双列角接触球轴承

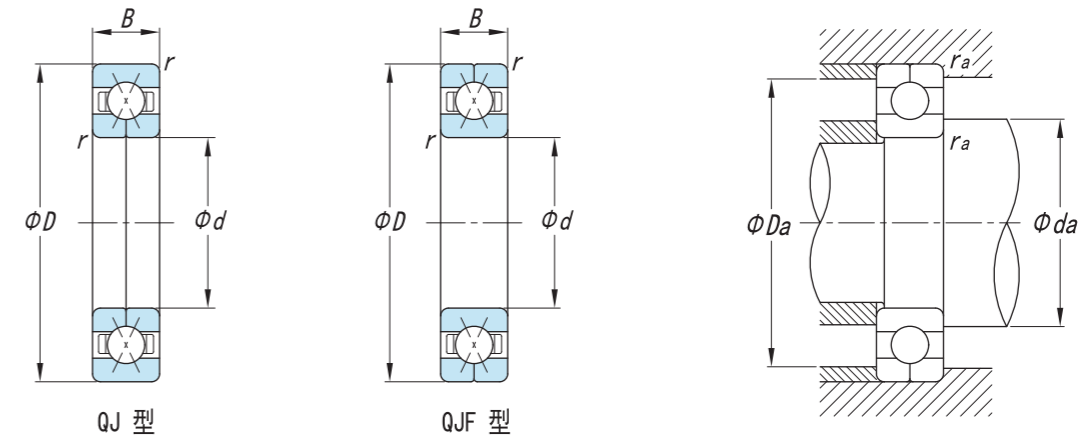
Double Row Angular Contact Ball Bearing



基本尺寸 Principal Dimensions (mm)				基本额定负荷 Basic Load Ratings (kN)		极限转速 Limit Speed (r/min)		作用点 Function Point (kN)	现代号 New code	重量 Mass (kg)
d	D	B	r	C _r	C _{or}	Grease	Oil			
220	309.5	76	2.1	248	381	1100	1500	301.9	4944X3D	18.0
	340	118	3	355	596	1000	1400	340.2	4044D/W33	38.8
240	359.5	118	3	370	648	900	1250	360.2	4048X1DM/W33	44.9
260	360	92	4	370	662	800	1200	362.2	4952X2D/W33	28.8
	369.5	92	4	370	662	800	1200	362.2	4952X3D/W33	24.3
280	389.5	92	4	375	683	750	1100	382.2	4956X3D/W33-1	34.0
300	419.5	112	2.1	420	791	700	1000	417.3	4960X3D	43.0
	460	160	4	565	1149	640	960	400	4060DY	97.9

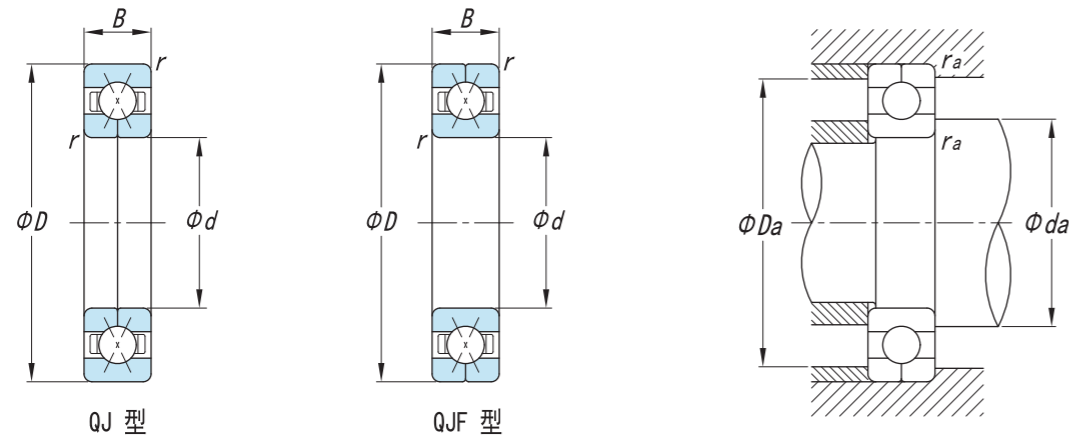
四点接触球轴承

Four-point Contact Ball Bearing



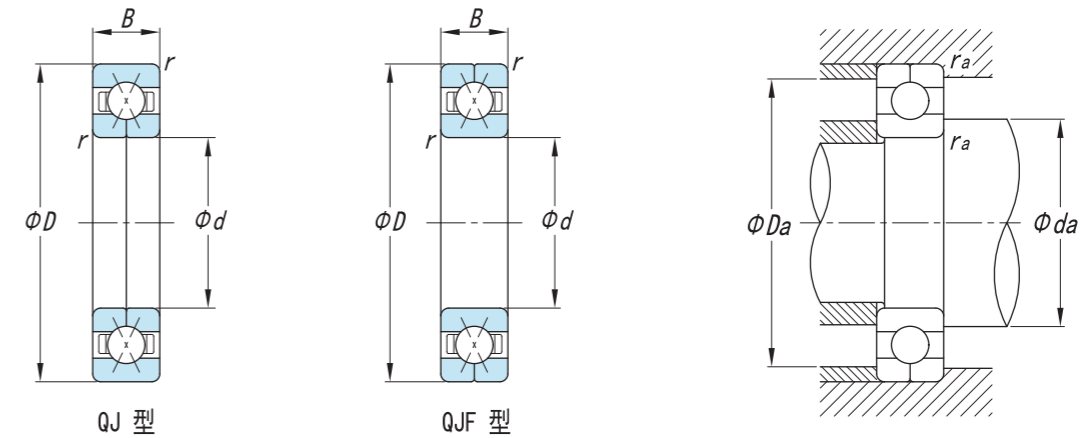
基本尺寸 Principal Dimensions (mm)				基本额定负荷 Basic Load Ratings (kN)		极限转速 Limit Speed (r/min)		作用点 Function Point (kN)	现代号 New code	重量 Mass (kg)
d	D	B	r _{1.2min}	C _r	C _{or}	Grease	Oil	a		
30	72	19	1.1	50	38	8000	11000	35.7	QJ306	0.463
35	80	21	1.5	57	42	7100	9500	40.3	QJ307Q1	0.690
45	100	25	1.5	88	72	5600	7500	50.8	QJ309	1.080
60	110	22	1.5	92	87	4800	6300	59.5	QJ212	0.928
65	140	33	2.1	150	132	3800	5300	71.8	QJ313Q1	2.32
	140	33	2.1	150	132	3800	5300	71.8	QJ313Q1	2.32
70	125	24	1.5	105	107	4000	5600	68.3	QJ214Q1	1.29
	150	35	2.1	180	166	3600	5000	78.4	QJ314	3.28
75	130	25	1.5	115	123	3800	5300	71.8	QJ215	1.38
	160	37	2.1	210	204	3400	4800	82.3	QJ315	3.83
	160	37	2.1	210	204	3400	4800	82.3	QJ315/C9	3.83
80	140	26	2	135	146	3600	5000	77	QJ216	2.02
85	180	41	3	245	255	3000	4000	92.8	QJ317	5.45
90	160	30	2	165	174	2900	3900	58.8	QJ218	2.87
	190	43	3	250	259	2800	3800	95	QJ318	6.25
	190	43	3	250	274	2800	3800	98	NJ318Q1	6.22
95	200	45	3	280	312	2600	3600	103.3	QJ319	7.52
100	150	24	1.5	100	128	3200	4300	87.5	QJF1020	1.63

四点接触球轴承 Four-point Contact Ball Bearing



基本尺寸 Principal Dimensions (mm)				基本额定负荷 Basic Load Ratings (kN)		极限转速 Limit Speed (r/min)		作用点 Function Point (kN)	现代号 New code	重量 Mass (kg)
d	D	B	r _{1.2min}	C _r	C _{or}	Grease	Oil	a		
100	180	34	2.1	215	230	2800	3800	98	QJ220	3.91
	180	34	2.1	215	230	2800	3800	98	QJ220Q1	3.74
	215	47	3	295	372	2400	3400	110.3	QJ320	8.78
110	170	28	2	145	186	2800	3800	98.1	QJ1022	2.68
	200	38	2.1	250	284	2600	3400	108.5	QJF222	5.67
	200	38	2.1	250	284	2600	3400	108.5	QJ222	5.71
	200	38	2.1	250	284	2600	3400	108.5	QJ222Q1	5.37
	240	50	3	360	442	2200	3000	122.5	QJ322	13.0
	240	50	3	340	405	2200	3000	122.5	QJ322Q1	11.7
120	215	40	2.1	270	318	2400	3200	117.3	QJ224	6.29
	215	40	2.1	270	318	2400	3200	117.3	QJ224Q1	6.29
	260	55	3	400	516	2000	2800	133	QJ324	15.3
	260	55	3	400	516	2000	2800	133	QJ324Q1	14.8
130	200	33	3	190	280	2500	3400	155	QJF1026	4.10
	230	40	3	290	369	2200	3000	126	QJ226Q1	8.2
	280	58	4	420	562	1900	2600	143.5	QJF326	20.7
	280	58	4	420	562	1900	2600	143.5	QJ326	20.1
140	300	62	2	465	645	1800	2200	154	QJ328MH	23.8
	210	33	2	265	273	2200	3000	122.5	QJF1028	4.21
	250	42	3	330	436	2000	2800	136.5	QJF228	10.4
	250	42	3	330	436	2000	2800	136.5	QJ228	9.36
	250	42	3	330	411	2000	2800	136.5	QJ228Q1	9.36
	300	62	4	465	646	1700	2400	154	QJ328	23.3
	300	62	4	465	646	1700	2400	154	QJ328Q1	23.0

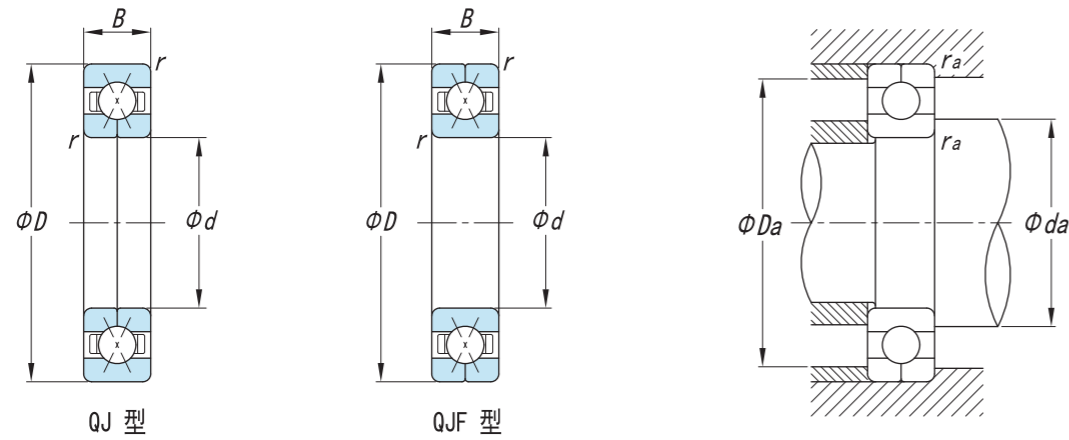
四点接触球轴承 Four-point Contact Ball Bearing



基本尺寸 Principal Dimensions (mm)				基本额定负荷 Basic Load Ratings (kN)		极限转速 Limit Speed (r/min)		作用点 Function Point (kN)	现代号 New code	重量 Mass (kg)
d	D	B	r _{1.2min}	C _r	C _{or}	Grease	Oil	a		
150	270	45	2.1	340	470	1800	2400	147	QJ230	12.0
	225	35	2.1	220	298	2000	2800	131.3	QJF1030	5.32
	225	35	2.1	220	298	2000	2800	131.3	QJ1030	5.2
	224	35	2.1	220	298	2000	2800	131.3	QJF1030X1	5.22
	225	35	2.1	220	298	2000	2800	131.3	QJF1030	5.32
	270	45	3	340	469	1800	2600	147	QJ230Q1	12.0
	320	65	4	535	796	1600	2200	164.5	QJF330	29.4
160	240	38	2.1	235	335	1450	1850	140	QJ1032	6.19
	240	38	2.1	235	336	1900	2600	140	QJF1032	6.54
	290	48	3	365	533	1700	2400	157.5	QJ232	15.2
	290	48	3	365	533	1700	2400	157.5	QJ232Q1	14.8
	290	48	3	365	5400	1700	2400	157.5	QJF232	14.9
170	259.5	42	2.1	290	409	1300	1600	150.5	QJF1034X1	7.88
	260	42	2.1	290	409	1800	2400	150.5	QJ1034N2Q1	8.06
	260	42	2.1	290	409	1800	2400	150.5	1JF1034	8.82
	260	42	2.1	290	409	1800	2400	150.5	QJ1034N2Q1	8.23
	310	52	4	450	687	1600	2200	168	QJ234	18.7
	310	52	4	585	742	1600	2200	111.9	QJ234N2Q1	18.2
	360	72	4	600	950	1100	1300	128.8	QJ334N2	39.7
180	280	46	2.1	320	481	1700	2200	161	1JF1036	10.9
	280	46	2.1	320	481	1700	2200	161	1J1036	11.2
	320	52	4	470	735	1500	2000	175.1	QJ236M	17.7
	320	52	4	470	735	1500	2000	175.1	QJF236	18.0
	380	75	4	680	1125	1500	2000	196.1	QJ336	46.2
	380	75	4	680	1125	1500	2000	196.1	QJ336N2	45.1

四点接触球轴承

Four-point Contact Ball Bearing



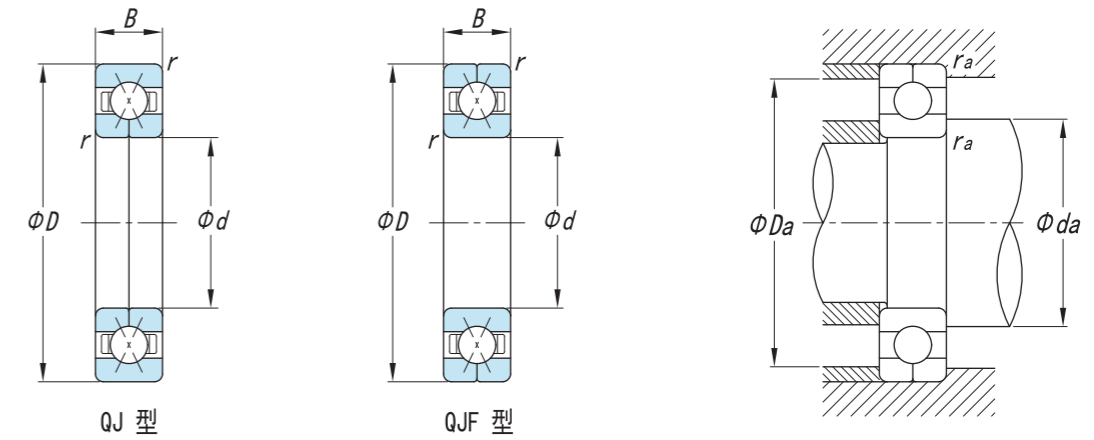
QJ 型

QJF 型

基本尺寸 Principal Dimensions (mm)				基本额定负荷 Basic Load Ratings (kN)		极限转速 Limit Speed (r/min)		作用点 Function Point (kN)	现代号 New code	重量 Mass (kg)
d	D	B	r _{1.2min}	C _r	C _{or}	Grease	Oil	a		
190	280	55	2.5	295	452	1600	2200	164.5	176738U	11.6
	290	46	2.1	320	483	1600	2200	168.1	QJF1038	11.4
	290	56	2.1	320	483	1600	2200	168.1	QJF1038X2	11.4
	290	46	2.1	320	483	1600	2200	168	QJ1038N2Q1	11.5
	340	55	4	495	796	1400	2000	185.6	QJF238	22.6
200	300	58	2.5	320	506	1500	2000	175.1	176740U	14.7
	310	51	2.1	385	619	1500	2000	178.6	QJ1040	15.0
	310	51	2.1	385	619	1500	2000	178.6	QJF1040	14.5
	360	58	4	510	853	1300	1800	196.1	QJF240	27.3
	420	80	5	735	1266	1200	1600	217.1	QJ340N2	55.3
	420	80	5	735	1266	1200	1600	217.7	QJ340N2	55.3
220	309.5	60	3	260	420	1200	1700	196.1	QJF8944X1	17.8
	340	56	3	306	420	1200	1700	196.1	QJ1044	17.8
	340	56	3	306	420	1200	1700	196.1	QJF1044	19.28
230	330	40	3	340	420	900	1300	118	QJ1046	12.9
240	360	56	3	340	420	900	1300	118	QJ1048	12.3
	339.5	60	3	380	500	800	1000	129.7	QJF3948X1	15.6
	339.5	60	3	380	500	800	1000	129.7	QJ3948X1	15.6
	360	56	3	425	756	1100	1500	210.1	QJ1048N2Q1	20.9
260	360	46	2.1	385	676	1000	1400	217.1	QJ1952E	15.5
	369.5	60	2.1	385	676	1000	1400	217.1		20.9
	374.5	60	2.1	298	676	1000	1400	217.1		23.1
	400	65	4	500	910	980	1200	231	QJ1052M	33.0

四点接触球轴承

Four-point Contact Ball Bearing



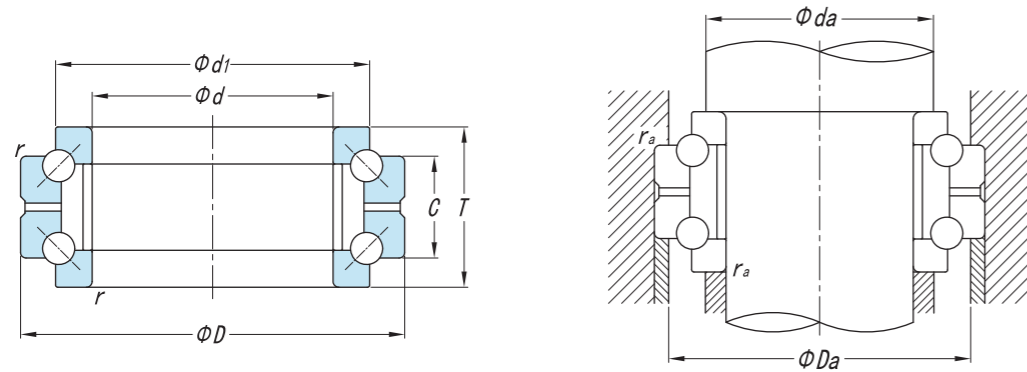
QJ 型

QJF 型

基本尺寸 Principal Dimensions (mm)				基本额定负荷 Basic Load Ratings (kN)		极限转速 Limit Speed (r/min)		作用点 Function Point (kN)	现代号 New code	重量 Mass (kg)
d	D	B	r _{1.2min}	C _r	C _{or}	Grease	Oil	a		
280	420	65	4	530	1010	960	1000	245.1	QJ1056M	34.4
	420	65	4	530	1010	960	1000	245.1	QJF1056	33.5
300	460	74	4	600	1224	900	1100	266.1	QJF1060	46.12
560	780	60	5	685	1840	600	800	469.1	QJF9/560X1	100

双向推力角接触球轴承

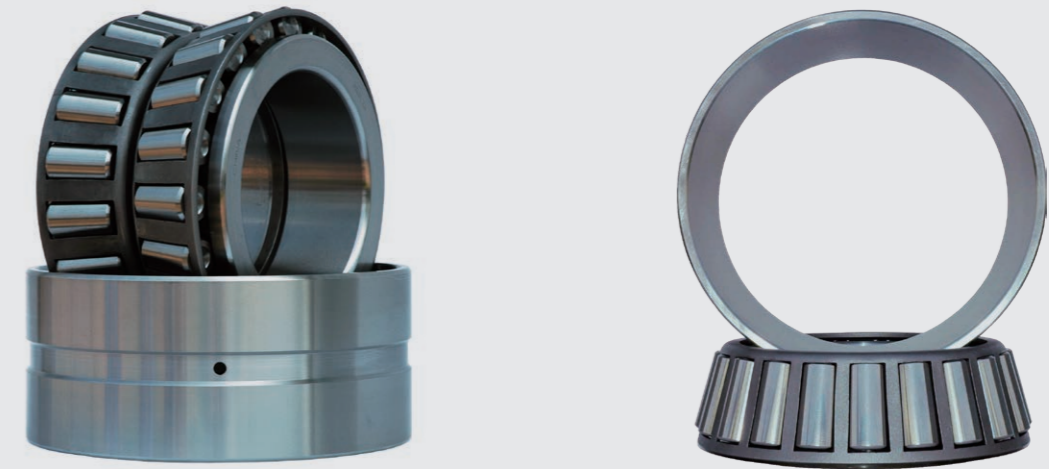
Double Way Thrust Angular Contact Ball Bearing



基本尺寸 Principal Dimensions (mm)						基本额定负荷 Basic Load Ratings (kN)		极限转速 Limit Speed (r/min)		尺寸 Dimensions (mm)	现代号 New code	重量 Mass (kg)
d	D	T	C	r _{min}	r _{1min}	C _r	C _{or}	Grease	Oil	d _{1max}		
100	140	48	24	1	0.6	70	280	4100	3100	126	234920	2.80
	150	60	30	2	1	105	400	3800	2900	133	234420	3.13
105	145	48	24	1	0.6	105	200	3700	2800	121	234921	3.20
	160	66	33	2	0.6	105	200	3500	2600	142	234421	4.15
110	150	48	24	1	0.6	124	345	3600	2700	136	234922	2.50
	170	72	36	2	0.6	276	780	3400	2600	150	234422	7.40
120	165	54	27	1	0.6	140	265	3400	2600	150	234924	3.40
	180	72	36	2	0.6	140	265	3200	2400	160	234424	5.54
150	210	72	36	2	1	150	320	2400	1800	190	234930	7.26
	225	90	45	2.1	0.6	248	390	2500	1900	200	234430	12.5
160	240	96	48	2.1	1.1	240	680	2300	1700	212	234432	14.0
170	230	72	36	2	1	180	450	2300	1800	210	234934	10.1
	260	108	54	2.5	1.3	285	590	2100	1600	230	234434	18.5

圆锥滚子轴承

Tapered roller bearing



圆锥滚子轴承的结构使其能够同时承受径向和轴向的复合载荷,适用于需要承受复杂工况的应用领域。由于其设计可以通过调整游隙来控制轴承的刚性和旋转精度,因此在汽车轮毂、工业齿轮箱、建筑机械等需要高承载能力和高耐久性的领域得到了广泛应用。

Tapered roller bearings have a structure that allows them to withstand both radial and axial composite loads, making them suitable for applications that require them to withstand complex working conditions. Because they are designed so that the clearance can be adjusted to control the rigidity and rotational accuracy of the bearing, they are widely used in automobile wheels, industrial gearboxes, construction machinery and other fields that require high load carrying capacity and durability.